



# Parish of the Holy Trinity, East Ham

St Mary Magdalene

St Bartholomew

St Edmund

Sunday 29 June

Year C

St Peter and St Paul

## IN OUR PRAYERS

**In our Deanery:** East Ham St Paul: Merrin Playle

**In the Diocese:** Orsett (St Giles and All Saints) with Bulphan (St Mary the Virgin) and Horndon-on-the-Hill (St Peter & St Paul): Sue Mann (V).

**In the Anglican Communion:** The Diocese of Nasik – The Church of North India (United)

**In the world:** For those who serve in legislatures and parliaments in the UK and across the world

**With USPG:** for all staff, speakers and delegates joining together for the USPG Conference.

Also keep in your prayers the work of Christian Aid and Mildmay

**In the Parish:** Darby Road, Doran Walk, Dorset Road

**Those who have asked our prayers:**

**Particular need:** Adiba Haque, Ethel King, Paul Gillard, Laurine & Ancil Griffith, Caroline Grisely, Jim Thompson, Andrew West

**Continuing need:** Jackie Brooks, Zareen Choudary, Cassandra Gosai, Maggie Holder, Terry & Prim Hooker, Cassie Martin, Dennis Pridmore, Mary Skerritt, Eutal Spence

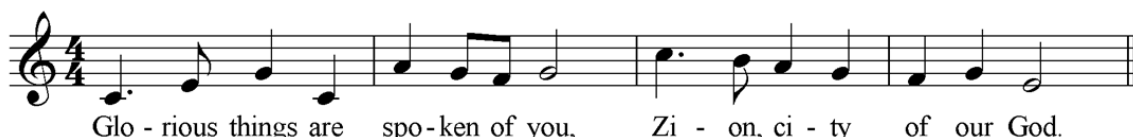
**In the Year's Mind:** those known to us whose anniversaries fall this week.

*May they rest in peace and rise in glory*



Hymns at St Mary's: 716, 689, 45, 16

Response to the Psalm:



**Fr Paul is away** at the USPG Conference in Swanwick 1-3 July

**Eucharist this week:** Tuesday 12.15pm at St Edmund's; Wednesday 6.30pm at St Mary; Thursday 12.15pm at St Bart's

**Eucharist next Sunday, Trinity 3 (6 July):** 8am & 10am St Mary's (Joint Parish Eucharist); no Sunday services at St Bart's and St Edmund's

**Youth Group** No youth group is meeting at present during this exam period but please let Fr Paul know if you or your children (aged 11-18) would be interested in another social event towards the end of term.

**Join us for a Picnic!** The MMP (Mission & Ministry Partnership) Churches are having a Picnic together in the Thames Barrier Park on **Saturday 12<sup>th</sup> July** between around 3pm - 5pm. Some travel directions: Pontoon Dock DLR is nearest station  
Bus routes 129, 241, 330 stop close by and 473, 474 stop a few minutes walk away.  
Any Questions? [shirleybiro@aol.com](mailto:shirleybiro@aol.com)

**Vintage & Pre-Loved Sale Saturday 19 July St Mary' Hall 10am-3pm.** As part of our Patronal Festival weekend there will be a sale of vintage and pre-loved clothes and other items. **\*\*Donations needed\*\*** Please give your clean pre-loved items to Claudette at St Mary's or contact her via the parish office.

Also on Saturday 19 July **St Mary Magdalene's Church will be open** with historic documents on display and **guided tours** available. **Refreshments** will be available in the Hall.

**St Mary Magdalene Patronal Festival Sunday.** On **Sunday 20 July** there will be a Joint Parish Eucharist at St Mary's at 10am followed by festival lunch. At **6pm** there will be a festive **Choral Evensong**. We welcome visiting signers to team up with our church choir for this special service.

**A message from the Eco-Church group:** have you enjoyed 'flaming June'? Too hot for some people, it's wildlife that can suffer, too. If you've been out and about for the Wildlife Trust '30 Day Challenge', you may have seen some thirsty bees, needing to be rescued. And grass fires are a real risk in wild areas. Let's hope we get some rain soon (but avoiding Wimbledon tennis!). As we go into July, your Eco-Church group is looking forward to St Mary's Patronal weekend - there will be tours of the Reserve, a chance to access grave records for your ancestor searches, and the Big Butterfly Count! Come and join us on 19th July.

**St Bart's Intercessory Prayer** will follow the service TODAY

**Meetings. Please note revised dates**

MMP 30 June at 7.15pm at St Mary Magdalene

Wednesday **9th** July – Standing Committee 3pm St Bart's

Sunday 13th July – St Bart's DCC 11am St Bart's

Sunday **27th** July – St Ed's DCC 11am St Ed's

Wednesday **23rd** July – St Mary's DCC 7.15pm St Mary's Hall

Tuesday **29th** July – PCC 7pm at St Bart's

Deanery Synod



**Acting Team Rector/  
Team Vicar:  
Associate Clergy:**

**Honorary Associate  
Clergy:**

**CONTACTS:**

**Parish of the Holy Trinity, East Ham**

The Parish Office, St Bartholomew's Church and Centre  
292b Barking Road, E6 3BA. Telephone: 020 8470 0011

email: [info@easthamparish.org.uk](mailto:info@easthamparish.org.uk)

website: [www.easthamparish.org.uk](http://www.easthamparish.org.uk)

Registered Charity No: 1127847

Rev. Paul Gurnham

Email: [paul.gurnham@easthamparish.org.uk](mailto:paul.gurnham@easthamparish.org.uk)

Rt Revd. Saulo Barros

Rev. John King

Rev. Katherine Ward

Rev. Canon Ann Easter

Rev. Sandra Eldridge

**Parish of the Holy Trinity**  
**St Mary Magdalene's Church**  
**Norman Road E6 6HN**

**St Mary's Hall**

**Vintage  
and  
Pre-loved**



**Refreshments  
and  
Bric-a-brac**



**Church open  
for  
Guided tours**

**Saturday 19<sup>th</sup> July**  
**10am to 3pm**

**Joint Services** Please note there are dates in this summer when only one or two 10am Sunday Eucharists will be offered in the parish. As well as the long planned patronal festival days there are some additional dates on which we need to hold joint services due to limited availability of clergy during this period of vacancy. The following table sets out the Sunday provision.

<b>Sunday</b>	<b>St Mary's</b>	<b>St Bart's</b>	<b>St Edmund's</b>
6 July	8am & 10am	<u>No Eucharist</u> <i>Joint at St Mary's</i>	<u>No Eucharist</u> <i>Joint at St Mary's</i>
13 July	8am & 10am	10am	<u>No Eucharist</u> <i>Joint at St Bart's</i>
20 July	8am & 10am Patronal Festival	<u>No Eucharist</u> <i>Joint at St Mary's</i>	<u>No Eucharist</u> <i>Joint at St Mary's</i>
27 July	8am & 10am	10am	10am
3 Aug	8am <u>No 10am Eucharist</u> <i>Joint at St Bart's</i>	10am	10am
10 Aug	8am & 10am	10am	10am
17 Aug	8am & 10am	10am	10am
24 Aug	8am & 10am	10am	10am
31 Aug	8am & 10am	<u>No Eucharist</u> <i>Joint at St Edmund's</i>	10am
7 Sept	8am <u>No 10am Eucharist</u> <i>Joint at St Bart's</i>	10am Patronal Festival	<u>No Eucharist</u> <i>Joint at St Bart's</i>
14 Sept	8am & 10am	10am	10am
21 Sept	8am & 10am	10am	10am
28 Sept	8am & 10am	10am	10am